

Wing Nut

Thread Type: Metric - Coarse

Thread Direction: Right Hand

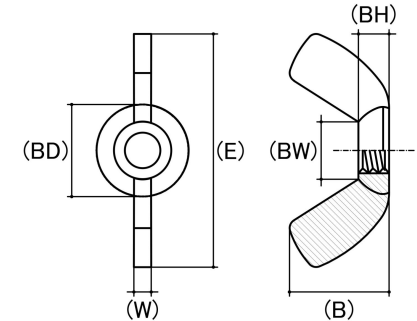
Material: Carbon Steel

Class Grade: Low Tensile Class 4.6

Finish: Zinc Plated

Corrosion Protection Level: Moderate

Standard: UNI 5448



*CAD drawings shown for graphic representation only.**

Size	Thread Pitch (mm)	Thread Type	Overall Nut Height (B) (mm)		Boss Diameter (BD) (mm)		Wing Span Range (E) (mm)		Wing Thickness (W) (mm)		Boss Height (BH) (mm)		Between Wings (BW) (mm)		sku (qfind)
			Min	Max	Min	Max	Min	Max	Min	Max	Min	Max	Min	Max	
M3	0.50	Coarse	8.00	9.10	7.00	8.00	17.25	19.50	2.10	2.80	2.85	3.30	5.10	6.25	41W3
M4	0.70	Coarse	8.00	9.10	7.20	7.80	18.00	19.00	2.20	2.40	3.00	3.20	5.20	5.50	41W4
M5	0.80	Coarse	9.60	11.00	9.90	10.90	19.00	24.00	2.50	3.56	3.80	4.00	6.10	6.30	41W5
M6	1.00	Coarse	11.00	13.50	11.40	12.70	24.00	28.00	3.50	4.50	4.70	5.00	8.00	8.60	41W6
M8	1.25	Coarse	13.60	15.50	12.90	14.70	26.00	32.00	4.30	5.38	5.10	5.70	8.00	8.60	41W8
M10	1.50	Coarse	16.50	18.50	16.20	17.70	33.00	37.00	5.00	6.10	5.70	6.30	10.30	10.60	41W10
M12	1.75	Coarse	21.00	25.40	21.80	23.65	45.00	50.00	6.60	8.40	7.60	8.40	13.10	13.50	41WM12
M16	2.00	Coarse	28.00	30.80	23.00	26.00	58.00	65.00	6.50	8.30	10.50	10.80	18.00	19.00	41W16
M20	2.50	Coarse	31.00	35.00	27.50	30.50	64.00	71.00	6.95	8.60	12.40	13.00	20.20	23.00	41W20

Disclaimer:

Dimensional data and technical information was obtained from publically available sources and not acquired through standard agencies. It has been completed and compiled for reference purposes only; where discrepancies are found they are subject to change without notice. Bolt & Nut Australia makes no warranties or representations regarding the accuracy and validity of the compiled information and data. Contact the relevant standard authorities for accurate and detailed information.

* CAD drawings may not reflect diameter, thread length or overall length.

© Bolt & Nut Australia Pty Ltd. All rights reserved.

Version: 18 Mar 2024